

BAVARIA CRUISER 34

Loop (2016)

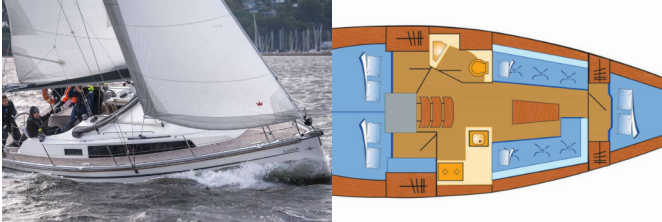


BeBlue S.R.L. • Via Barche 53 • 30035 Mirano (Ve) • Italy

Telephone: [+39 041 86 27 010](tel:+390418627010)

E-mail: info@beblue.it

Web: www.bebluesailing.com



Marina	Marina Flensburg Sonwik, Germany
Yacht ID	323273
Shipyard	Bavaria Yachtbau
Boat Name	Loop
Year	2016
Length	9.99 M
Cabins	3
Beds	6
WC/Shower	1

PREMIUM EQUIPMENT: Heating, Teak deck

DECK EQUIPMENTS: Anchor light, Anchor with chain, Boat hook, Cockpit table, Deck brush, Electric anchor windlass, Fenders, Mooring ropes , Plastic bucket, Teak deck, 220 volt socket, Plugs 12v, Shore power cable, VHF radio , Barometer, Bilge pump - mechanic, Clock, Hand-held compass , Heating, Yacht documents, Yacht keys, Coffee pot, Electrical kettle, Gas cookers, Hot water, Ice box, Kitchen utensils (Galley equipment, cutlery), Pressurized water system, Sink, AIS, Autopilot, Binoculars, Bow thruster, Compass, Echosounder/Depthsounder, GPS chart plotter, Log, Navigation/position Lights, Radar, Triangles, Wind instrument/Anemometer, Tablet, TV + DVD, Automatic vest, Distress signals, Fire extinguisher , First aid kit , Fog horn, Guard rail, Life belts (Safety harness), Life buoy and Flashing light, Liferaft , Lazy bag

ELECTRICAL SYSTEM: Anchor light, Anchor with chain, Boat hook, Cockpit table, Deck brush, Electric anchor windlass, Fenders, Mooring ropes , Plastic bucket, Teak deck, 220 volt socket, Plugs 12v, Shore power cable, VHF radio , Barometer, Bilge pump - mechanic, Clock, Hand-held compass , Heating, Yacht documents, Yacht keys, Coffee pot, Electrical kettle, Gas cookers, Hot water, Ice box, Kitchen utensils (Galley equipment, cutlery), Pressurized water system, Sink, AIS, Autopilot, Binoculars, Bow thruster, Compass, Echosounder/Depthsounder, GPS chart plotter, Log, Navigation/position Lights, Radar, Triangles, Wind instrument/Anemometer, Tablet, TV + DVD, Automatic vest, Distress signals, Fire extinguisher , First aid kit , Fog horn, Guard rail, Life belts (Safety harness), Life buoy and Flashing light, Liferaft , Lazy bag

INTERIOR DESIGN: Anchor light, Anchor with chain, Boat hook, Cockpit table, Deck brush, Electric anchor windlass, Fenders, Mooring ropes , Plastic bucket, Teak deck, 220 volt socket, Plugs 12v, Shore power cable, VHF radio , Barometer, Bilge pump - mechanic, Clock, Hand-held compass , Heating, Yacht documents, Yacht keys, Coffee pot, Electrical kettle, Gas cookers, Hot water, Ice box, Kitchen utensils (Galley equipment, cutlery), Pressurized water system, Sink, AIS, Autopilot, Binoculars, Bow thruster, Compass, Echosounder/Depthsounder, GPS chart plotter, Log, Navigation/position Lights, Radar, Triangles, Wind instrument/Anemometer, Tablet, TV + DVD, Automatic vest, Distress signals, Fire extinguisher , First aid kit , Fog horn, Guard rail, Life belts (Safety harness), Life buoy and Flashing light, Liferaft , Lazy bag

KITCHEN: Anchor light, Anchor with chain, Boat hook, Cockpit table, Deck brush, Electric anchor windlass, Fenders, Mooring ropes , Plastic bucket, Teak deck, 220 volt socket, Plugs 12v, Shore power cable, VHF radio , Barometer, Bilge pump - mechanic, Clock, Hand-held compass , Heating, Yacht documents, Yacht keys, Coffee pot, Electrical kettle, Gas cookers, Hot water, Ice box, Kitchen utensils (Galley equipment, cutlery), Pressurized water system, Sink, AIS, Autopilot, Binoculars, Bow thruster, Compass, Echosounder/Depthsounder, GPS chart plotter, Log, Navigation/position Lights, Radar, Triangles, Wind instrument/Anemometer, Tablet, TV + DVD, Automatic vest, Distress signals, Fire extinguisher , First aid kit , Fog horn, Guard rail, Life belts (Safety harness), Life buoy and Flashing light, Liferaft , Lazy bag

NAVIGATION SYSTEM: Anchor light, Anchor with chain, Boat hook, Cockpit table, Deck brush, Electric anchor windlass, Fenders, Mooring ropes , Plastic bucket, Teak deck, 220 volt socket, Plugs 12v, Shore power cable, VHF radio , Barometer, Bilge pump - mechanic, Clock, Hand-held compass , Heating, Yacht documents, Yacht keys, Coffee pot, Electrical kettle, Gas cookers, Hot water, Ice box, Kitchen utensils (Galley equipment, cutlery), Pressurized water system, Sink, AIS, Autopilot, Binoculars, Bow thruster, Compass, Echosounder/Depthsounder, GPS chart plotter, Log, Navigation/position Lights, Radar, Triangles, Wind instrument/Anemometer, Tablet, TV + DVD, Automatic vest, Distress signals, Fire extinguisher , First aid kit , Fog horn, Guard rail, Life belts (Safety harness), Life buoy and Flashing light, Liferaft , Lazy bag

PLEASURE EQUIPMENTS: Anchor light, Anchor with chain, Boat hook, Cockpit table, Deck brush, Electric anchor windlass, Fenders, Mooring ropes , Plastic bucket, Teak deck, 220 volt socket, Plugs 12v, Shore power cable, VHF radio , Barometer, Bilge pump - mechanic, Clock, Hand-held compass , Heating, Yacht documents, Yacht keys, Coffee pot, Electrical kettle, Gas cookers, Hot water, Ice box, Kitchen utensils (Galley equipment, cutlery), Pressurized water system, Sink, AIS, Autopilot, Binoculars, Bow thruster, Compass, Echosounder/Depthsounder, GPS chart plotter, Log, Navigation/position Lights, Radar, Triangles, Wind instrument/Anemometer, Tablet, TV + DVD, Automatic vest, Distress signals, Fire extinguisher , First aid kit , Fog horn, Guard rail, Life belts (Safety harness), Life buoy and Flashing light, Liferaft , Lazy bag

SAFETY: Anchor light, Anchor with chain, Boat hook, Cockpit table, Deck brush, Electric anchor windlass, Fenders, Mooring

PRICES AND AVAILABILITY

Bavaria Cruiser 34 Loop (2016)



24.05. - 30.05.2025

Booked

14.06. - 27.06.2025

Booked

28.06. - 04.07.2025

Booked

05.07. - 08.08.2025

Booked

09.08. - 15.08.2025

Booked

23.08. - 29.08.2025

Booked

30.08. - 05.09.2025

Booked

13.09. - 19.09.2025

Booked

11.10. - 24.10.2025

Booked